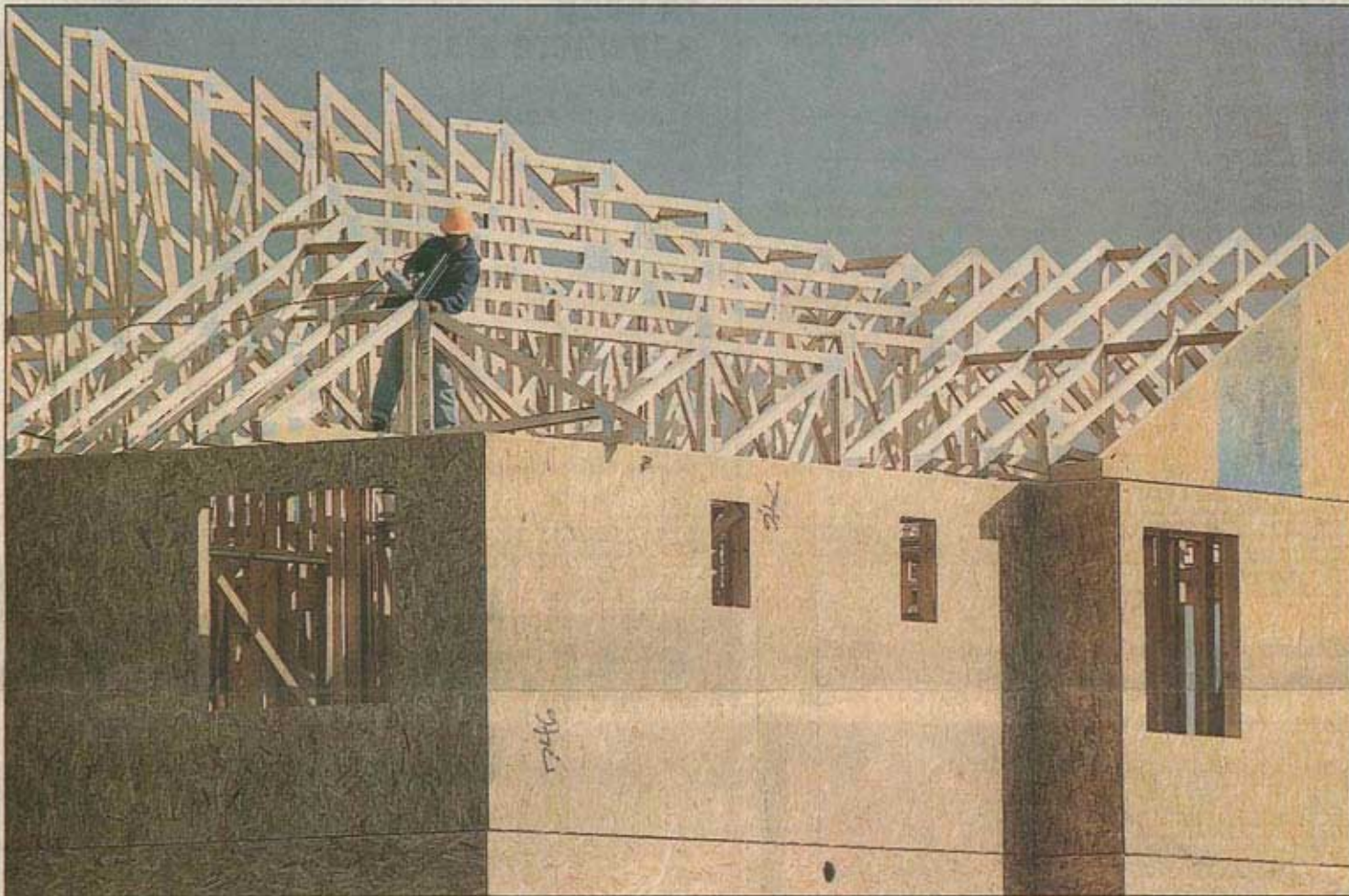


ECONOMY DOESN'T STOP CONSTRUCTION



Richard M. Hackett/Times-Call

Work progresses on the Lodge at Hover Crossing in Longmont on Monday. Krische Construction of Longmont is the general contractor for the Lodge at Hover Crossing, a new low-income senior housing facility being built near 18th Avenue and Hover Street. The \$5.85 million Lodge will be a three-story, 42,000-square-foot multifamily building available for seniors who make less than 30 percent of the area's median income. It is scheduled for completion in July.